

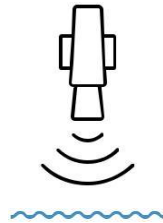
EARLY WARNINGS AND INFORMED DECISIONS

# T35 REMOTE TANK LEVEL SENSOR



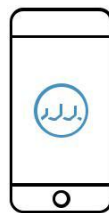


# T35 SYSTEM



## TANK LEVEL SENSOR

Continuously monitor tank levels with pinpoint accuracy. The T35 is designed to easily mount on plastic based tanks. Quick to install with four self tapping screws there is no need to cut holes in the tank. The T35's highly directional radar based sensor penetrates the tank surface to measure liquid levels within.



## CONNECTED ALERTS

Set level thresholds and rest easy knowing alarm notifications will inform you if levels rise too high or drop too low.



## DATA COLLECTION

Valuable information is recorded allowing informed decisions to eliminate potential issues and unnecessary costs in the future.



# T35 BASIC SPECIFICATIONS



0.5% ACCURACY

3.5m range



LONG LIFE BATTERY

10+ years



WATERPROOF

IP67 waterproof enclosure



DESKTOP/MOBILE

IOS/Android



LIVE DATA

data visualisation  
CSV export



ALERTS

create thresholds  
app/email alerts



WIRELESS

SIGFOX  
LTE Cat M1/  
NB-IOT



CLOUD BASED

device management  
access control  
secure APIs



# T35 TECHNICAL INFORMATION

## RADIO SPECIFICATIONS

Bluetooth Low Energy	2.4-2.483 GHz
SIGFOX region	920-923MHz
NB-IoT/M1	700MHz, 2100MHz

## ENVIRONMENT

Protection	IP67
Operating Temperature	-20° C to + 60° C
Recommended Storage Temperature	15° C to + 25° C

## POWER

Battery Life 10+ years  
3.6V Lithium Battery

## SENSOR PARAMETERS

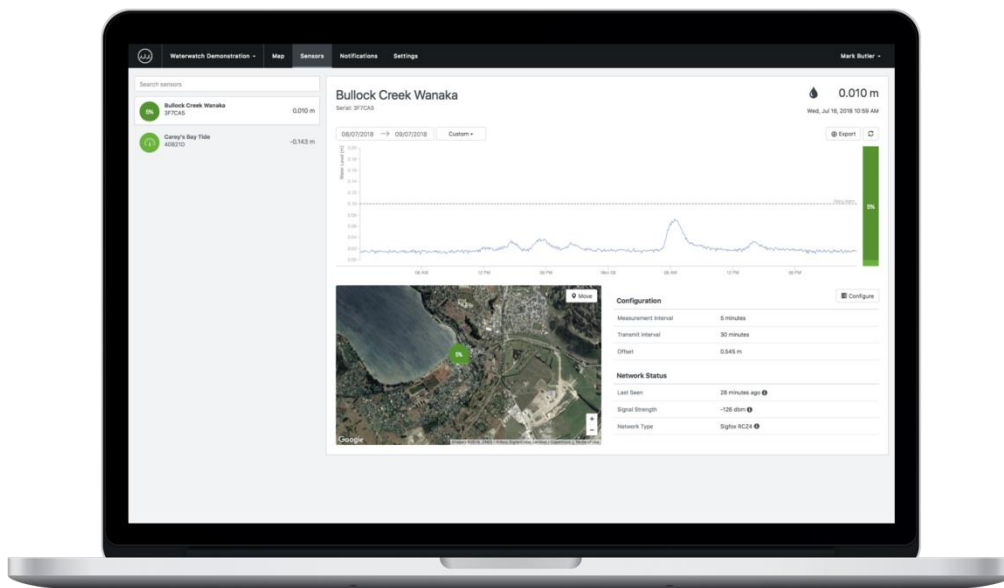
Sensing Technology	60GHz Radar
Measurement Range	3.5m
Measurement Accuracy	0.5%

## RADIO OUTPUT POWER

Sigfox/NB-IoT/Cat M	<24dB
Bluetooth	0dB

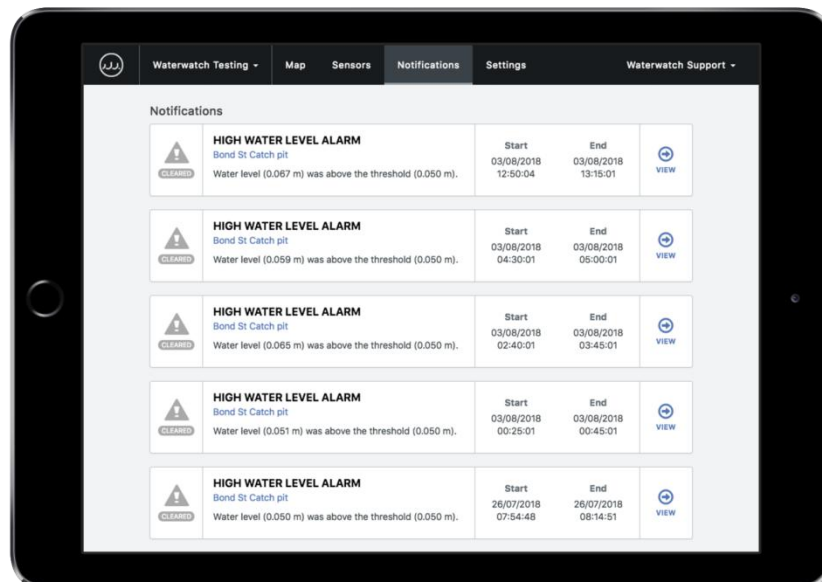
## DATA DASHBOARD

Waterwatch Live is the dashboard and cloud service used to collect field data. The dashboard and sensors can be configured for a large number of water based applications. Providing data and notifications to selected users.



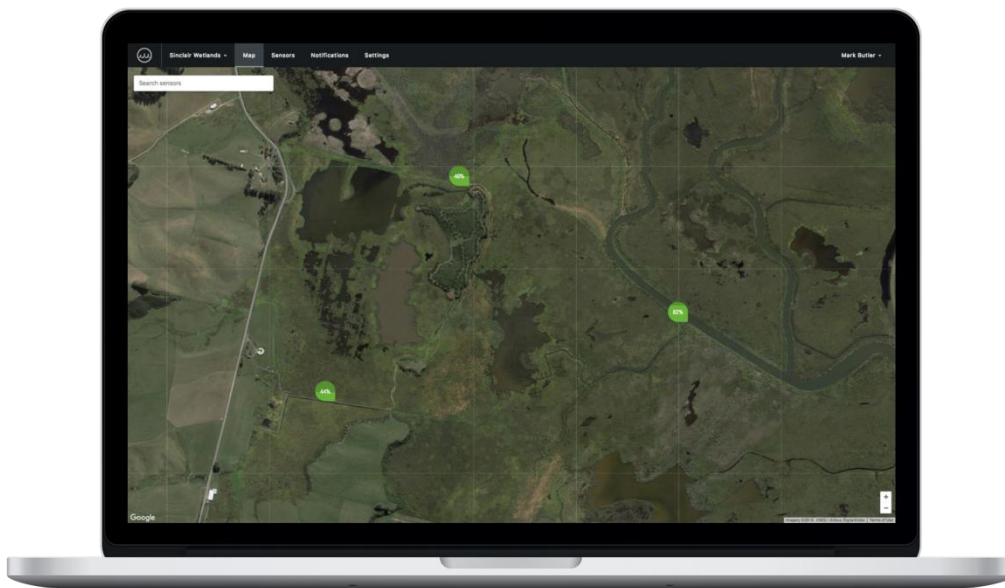
## THRESHOLD DETECTION

Alarms can be configured for threshold detection, triggering quick responses that can be defined by the project administrator.



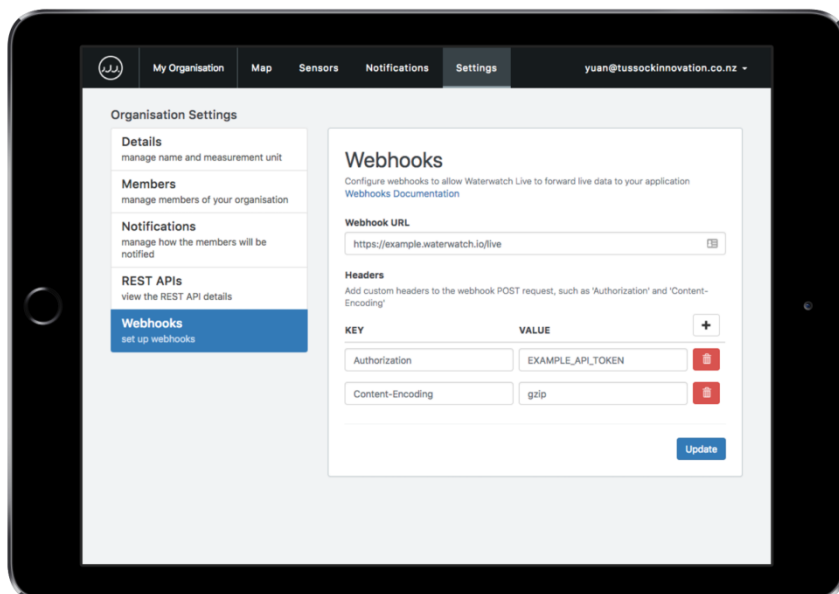
## SPACIAL INFORMATION

The Waterwatch Live dashboard also features spatial information for each of the field sensors. It is possible to relocate the sensor position via both the web dashboard and the mobile application.



## API AND THIRD PARTY INTEGRATION

Collect or analyse data into third party systems using our authenticated Webhook and API integrations.





# T35 HARDWARE

## PHYSICAL CHARACTERISTICS

Overall Dimensions

130x110x90mm

Weight

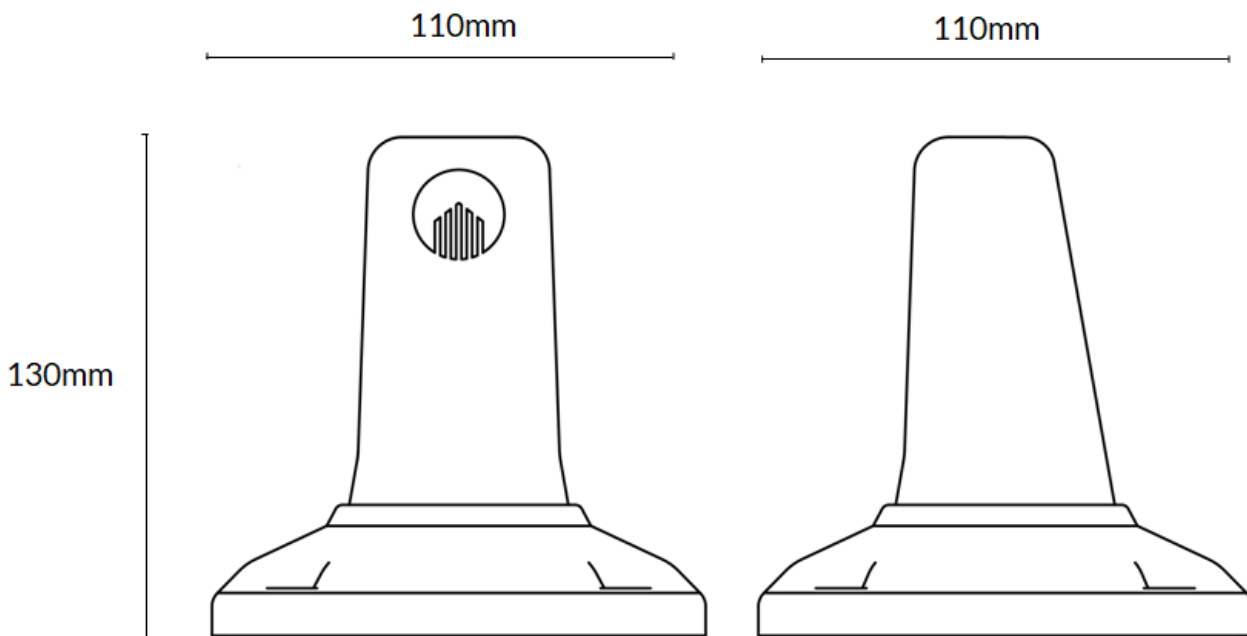
240g

Enclosure Material

Polycarbonate + PBT

Mounting

M4 Screw hole



## PART NUMBER DESCRIPTOR

T35-RCZ4

Model [T35]

LPWAN Radio and Region [RCZ4]

Tank Level Sensor

Sigfox Region 4

## AVAILABLE PART VARIANTS

T35-RCZ4

T35-CEL

(Sigfox Region 4)

(LTE NB-IoT/M Bands 3/28)